

Genetics For Generations

At Koester Red Angus, we focus on optimums, not maximums, to produce cattle that are balanced in all traits. We strive to develop efficient, maternal cattle that combine performance, structural soundness and phenotype from the moment their progeny hit the ground until they hang on the rail.

By blending trait-leading genetics with proven outcross lines, we enhance economic traits to keep us all in the beef business for this generation and generations to come.



Lot 24 • Bieber Rob Roy 10444 x BFCK Cherokee Cnyn 4912

*Selling
18-month-old bulls
in conjunction with*

Leland Red Angus

March 12, 2010

At the Ranch • Sidney, MT
150 Bulls • 60 Heifers

Progeny sell from ...

5L Norseman King

Bieber Rob Roy 10444

Brown Commitment 7206

Bieber Boone 8000

Bieber Make Mimi 7249

Glacier Chateau 744

LCHMN Red Spread 1271F



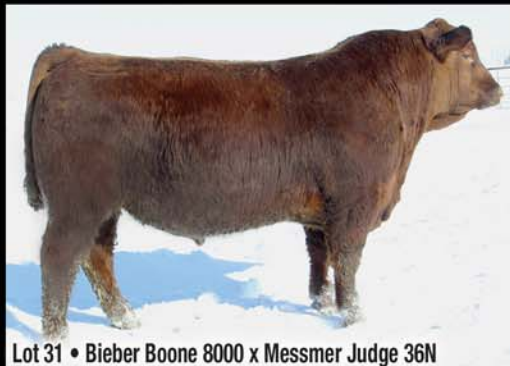
Lot 26 • LCHMN Red Spread 1271F x LCC Cheyenne B221L



Lot 25 • Brown Commitment 7206 x MLK CRK Barney 006

View catalog and
more photos at:

KoesterRedAngus.com



Lot 31 • Bieber Boone 8000 x Messmer Judge 36N



Lot 27 • Feddes Big Sky R9 x Lorenzen High Prairie 2356

Steve & Tracey Koester
2877 47th St SE • Steele, ND 58482
(701) 475-2736 • (701) 400-1611 cell
www.KoesterRedAngus.com • koester@bektel.com

KOESTER (K)
red angus